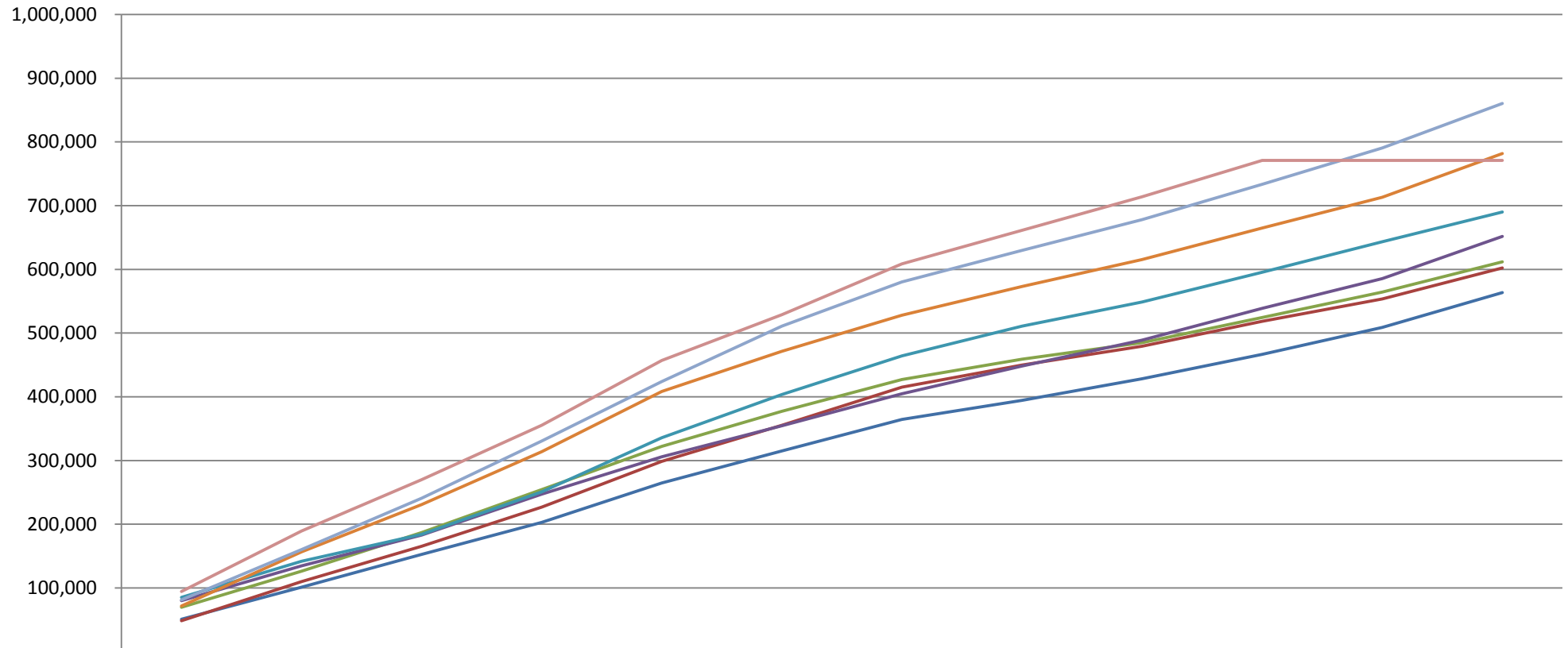
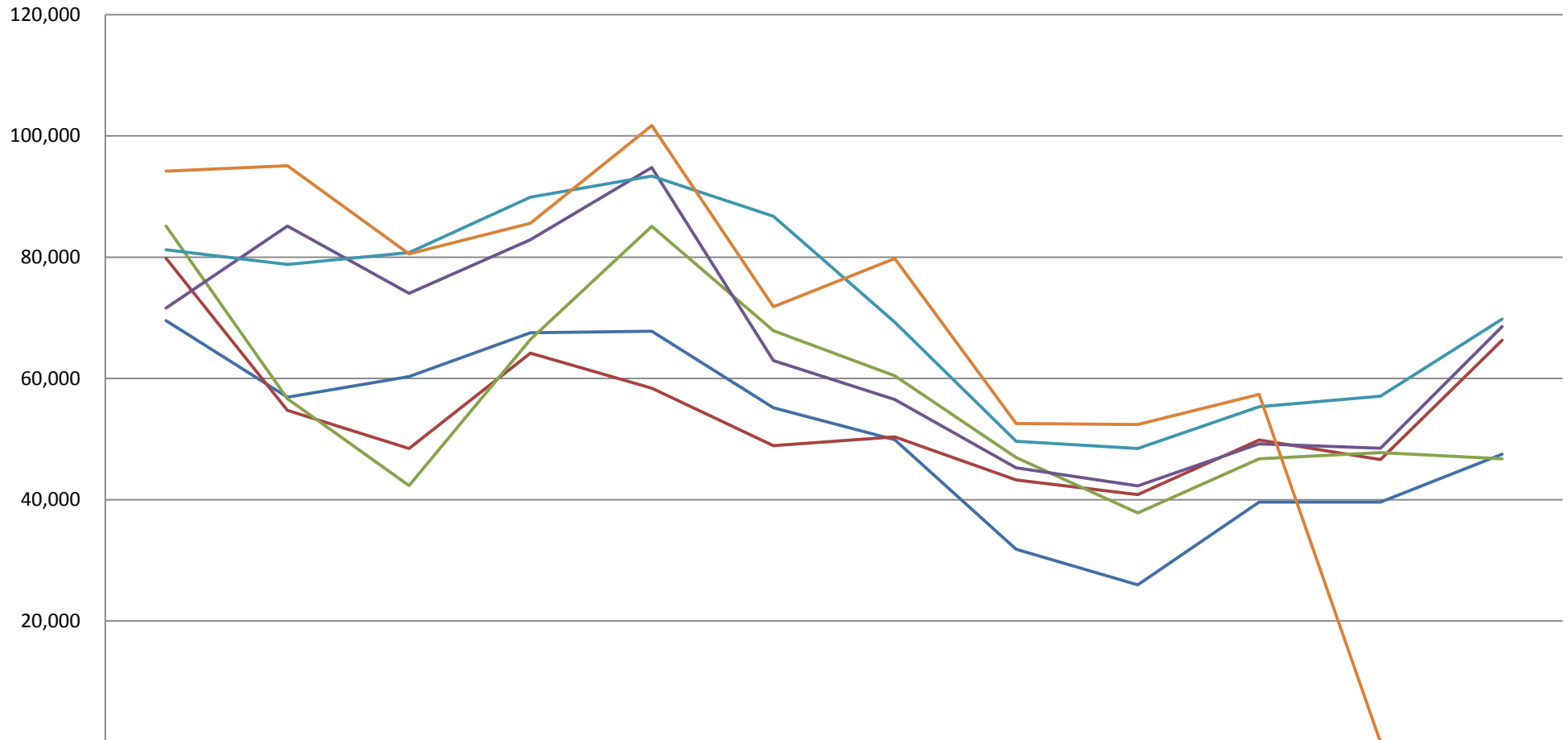


Cumulative visitor numbers 2008/09 to 2015/16



| | Apr | May | Jun | Jul | Aug | Sep | Oct | Nov | Dec | Jan | Feb | Mar |
|---------|--------|---------|---------|---------|---------|---------|---------|---------|---------|---------|---------|---------|
| 2008/09 | 50,908 | 101,271 | 152,731 | 202,796 | 264,596 | 314,981 | 364,394 | 394,559 | 428,374 | 466,532 | 508,760 | 563,460 |
| 2009/10 | 48,428 | 109,843 | 165,293 | 226,866 | 298,521 | 355,174 | 415,157 | 450,015 | 479,415 | 518,633 | 553,408 | 602,116 |
| 2010/11 | 69,528 | 126,442 | 186,755 | 254,308 | 322,108 | 377,258 | 427,158 | 458,986 | 484,956 | 524,581 | 564,184 | 611,707 |
| 2011/12 | 79,843 | 134,583 | 183,028 | 247,223 | 305,626 | 354,538 | 404,923 | 448,171 | 489,026 | 538,901 | 585,533 | 651,833 |
| 2012/13 | 85,138 | 141,776 | 184,129 | 250,564 | 335,679 | 403,562 | 464,014 | 510,964 | 548,797 | 595,542 | 643,319 | 690,092 |
| 2013/14 | 71,605 | 156,758 | 230,811 | 313,689 | 408,479 | 471,416 | 527,951 | 573,236 | 615,524 | 664,726 | 713,204 | 781,764 |
| 2014/15 | 81,245 | 160,045 | 240,788 | 330,700 | 424,075 | 510,850 | 580,135 | 629,775 | 678,210 | 733,540 | 790,628 | 860,433 |
| 2015/16 | 94,185 | 189,265 | 269,828 | 355,418 | 457,133 | 528,960 | 608,745 | 661,340 | 713,753 | 771,135 | 771,135 | 771,135 |

Monthly Visitor Numbers 2010/11 to 2015/16



| | Apr | May | Jun | Jul | Aug | Sep | Oct | Nov | Dec | Jan | Feb | Mar |
|-----------|--------|--------|--------|--------|---------|--------|--------|--------|--------|--------|--------|--------|
| — 2010/11 | 69,528 | 56,914 | 60,313 | 67,553 | 67,800 | 55,150 | 49,900 | 31,828 | 25,970 | 39,625 | 39,603 | 47,523 |
| — 2011/12 | 79,843 | 54,740 | 48,445 | 64,195 | 58,403 | 48,913 | 50,385 | 43,248 | 40,855 | 49,875 | 46,633 | 66,300 |
| — 2012/13 | 85,138 | 56,638 | 42,353 | 66,435 | 85,115 | 67,883 | 60,453 | 46,950 | 37,833 | 46,745 | 47,778 | 46,773 |
| — 2013/14 | 71,605 | 85,153 | 74,053 | 82,878 | 94,790 | 62,938 | 56,535 | 45,285 | 42,288 | 49,203 | 48,478 | 68,560 |
| — 2014/15 | 81,245 | 78,800 | 80,743 | 89,913 | 93,375 | 86,775 | 69,285 | 49,640 | 48,435 | 55,330 | 57,088 | 69,805 |
| — 2015/16 | 94,185 | 95,080 | 80,563 | 85,590 | 101,715 | 71,828 | 79,785 | 52,595 | 52,413 | 57,383 | - | - |